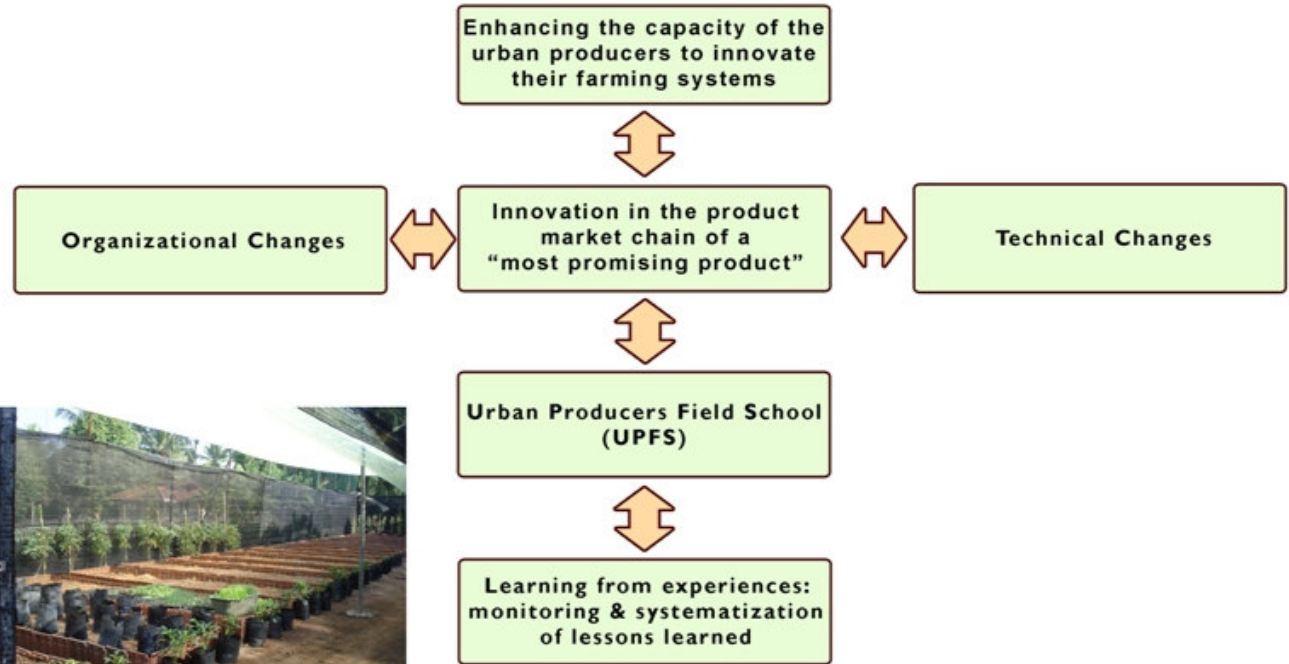




Urban Market, Magadi, India.  
Photo Credit: Sulaiman, IWM

## MAIN COMPONENTS OF A LOCAL FSTT PROJ



Source: ETC-RUAF

## BACKGROUND

Urban Agriculture is not a new phenomenon. Many poor urban households engage in food production, processing and vending as a main or complementary strategy to secure food supply and /or earn an income in many cities. As per UNDP (1996) estimated around 800 million people are engaged in UA world wide. Of these 200 million are considered to be market producers, employing 150 million people full time. These figures are steadily increasing, with emerging challenges like migration of rural poor to cities, food security and, global food and fuel prices.

## AIM

The RUAF-FStT (From Seed to Table) project aims to facilitate the development of sustainable urban farming systems and to contribute to urban poverty alleviation and enhanced urban food security, social inclusion and empowerment of urban disadvantaged groups in 18 partner cities around the world.



Latin America: Lima (Peru), Belo Horizonte (Brazil), Bogota (Colombia)  
 Africa: Bobo Dioulasso (Burkina Faso), Porto Novo (Benin), Accra (Ghana)  
 Ibadan (Nigeria), Freetown (Sierra Leone), Bulawayo (Zimbabwe),  
 Cape Town (South Africa), Ndola (Zambia)  
 Asia: Beijing and Shanghai (China), Bangalore (India), Gampaha (Sri Lanka)  
 Middle East: Amman (Jordan) and Sa'ana (Yemen)

## EXPECTED OUTPUTS AND RESULTS

- The capacities of the RUAF regional resources centre on urban agriculture and food security have been strengthened and their continuity has been secured
- A comprehensive set of training materials has been produced and made available to regional and local trainers
- About 50 staff of NGO's, farmer organisations, training and research institutes and local governments have been trained in the FSTT approach to Farming System Innovation and empowerment of urban farmer organisations
- About 2000 urban producers have been trained in various subjects related to sustainable urban farming farmer led development of urban farming
- Between 18-30 farmer organisations (1-2 per partner city) have been strengthened (strategic development agenda, improved internal functioning, improved external relations, group savings scheme established, etcetera)
- The farmer based/led FSTT projects have been implemented leading to a 10-15% increase in income and nutrition in the participating households (around 100 households/project)
- At least 1 credit institution in each of the partner cities has started to provide credit to urban farmers with acceptable conditions
- In at least two/third of the RUAF partner cities a Municipal policy and/or a City Strategic Action Plan on urban agriculture has been formalised and is being implemented
- In at least 1 country/region national policies on urban agriculture are being revised or formulated
- At least 100 students and staff of NGO's, research institutes and governments are trained in FSTT related subjects
- The local actors in the RUAF partner cities as well as 10,000 subscribers to the UA-Magazine (2 issues a year) and over a million visitors/year to the RUAF website receive up to date information on urban agriculture
- The participating organisations are monitoring the FSTT projects to improve their performance regarding development of sustainable urban agriculture and to draw lessons from the experiences gained in the FSTT projects for use in the planning of future activities



Urban Agriculture, Magadi, India.  
Photo Credit: Sulaiman, IWM





Urban Agriculture, Gampaha, Sri Lanka  
Photo Credit: Priyanie Amerasinghe, IWMI

## IWMI



The International Water Management Institute (IWMI, [www.iwmi.org](http://www.iwmi.org)), located in 12 locations in Asia and Africa, is a member of the Consultative Group on International Agriculture Research (CGIAR). With a vision of "Water for a food secure world", IWMI's mission is to improve water and land resources management for food, livelihoods, and environment. It seeks to achieve this through an international program of research and related activities largely carried out through collaboration with national and international partners, in a manner that contributes to strengthening capacities in developing countries. IWMI is Member of the RUAF foundation FSTT project falls under IWMI's "Water Quality, Health and Environment" Theme.

## THE RUAF FOUNDATION



The RUAF Foundation is an international network of six regional resource centres and one global resource centre on Urban Agriculture and Food Security. In 1996 the international Support Group on Urban Agriculture (SGUA) took the initiative to set up a Resource Centre on Urban Agriculture and Food Security (RUAF), in response to the expressed need of organisations and local governments in the South for effective mechanisms for the documentation and exchange of research data and practical experiences on urban agriculture. In the following years RUAF gradually evolved into an international network of regional resource centres providing training, technical support and policy advice to local and national governments, producer organizations, NGO's and other local stakeholders. In March 2005 the RUAF partners established the RUAF Foundation as their joint administrative body and liaison office. RUAF focuses its activities mainly in 20 cities, where RUAF closely cooperates with the local government, producer organisations, NGO's, universities and private enterprises.

### Contact us:

Dr. Priyanie Amerasinghe  
RUAF Regional Coordinator for South and Southeast Asia  
IWMI-India (International Water Management Institute - India)  
c/o ICRISAT Patancheru, Hyderabad-502 324, Andhra Pradesh, India

Tel: 00 91 40 3071 3745

Fax: 00 91 40 3071 3074 / 3071 3075

E-mail: [PAmerasinghe@cgiar.org](mailto:PAmerasinghe@cgiar.org)

Website: [www.iwmi.cgiar.org/southasia/ruaf/about.html](http://www.iwmi.cgiar.org/southasia/ruaf/about.html)

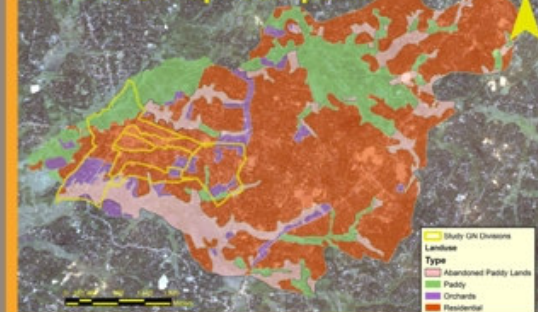


Urban Agriculture, Gampaha, Sri Lanka  
Photo Credit: Dr Priyanie Amerasinghe, IWMI

### "From Seed to Table"

Strengthening Urban Farmer Organization  
and their Marketing Capacity

### Land use Map-Gampaha



Urban Market, Megadi, India  
Photo Credit: Suleman, IWMI

RUAF-FSTT